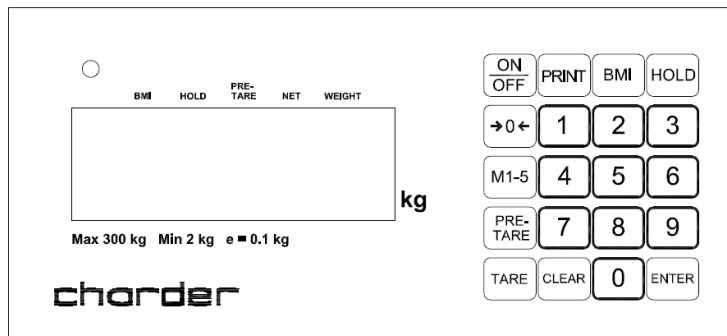
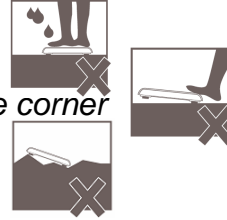


## Quick Guide for Indicator DP2701 (MS4610)



Important : Before operations, make sure you read and understand the manual.

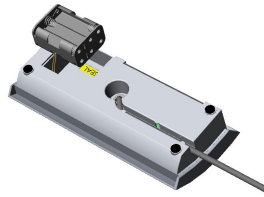
**Caution :** Should keep indoor weighing, without water  
Stepping on in the middle part, should not step on the corner  
Should place the scale on the flat surface



**Steps :**

1

**YOU WILL NEED ...**



AAA x6 battery

2

Put the scale on the flat surface

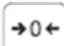


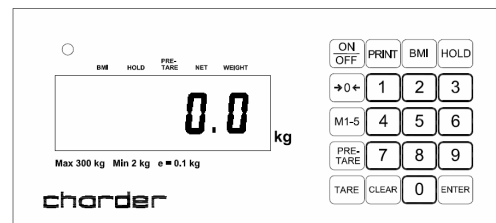
and keep bubble level in the center



3

Turn on the scale.

Press  to zero the scale.

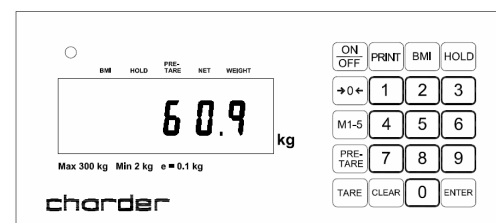


4


Press HOLD before stepping on the scale.

After beep sound, step down.

Measurement is completed !!



## KEY FUNCTIONS (DP2701 DISPLAY- MS4610)

Key	Description
ON/OFF	Turn ON/OFF the scale
PRINT	Print-out the results
BMI	Determine Body Mass Index
HOLD	To hold weighing result
	Zero the scale
M1-5	To store 5 pre-tare values
PRE-TARE	Setup preset tare weight before weighing
TARE	Tare weight during weighing process
CLEAR	To clear the wrong entry
ENTER	To confirm the performing functions.
0-9	Entering digits



Charder Electronic Co., Ltd  
103 Guo Zhong Road. Dah Li Dist. Taichung City. Taiwan 41262  
TEL:+886 4 24063766  
FAX:+886 4 24065612  
[www.chardermedical.com](http://www.chardermedical.com)