

PRINT FUNCTION INSTRUCTION

The Weighing, BMI and Height results can be printed-out for records using RS232 interface cable (included in accessory kit), which is connected with the round plug at the back terminal.

After weighing and calculating BMI simply press PRINT key to print out the results. The format presented below is the standard format of results print-out and cannot be changed.

```
GROSS WEIGHT 60.00kg
TARE WEIGHT   30.00kg
NET WEIGHT    30.00kg
PATIENT HEIGHT 100.0cm
PATIENT B.M.I 37.5
29/12/2008 17:00
```

PARAMETERS OF RS232 INTERFACE

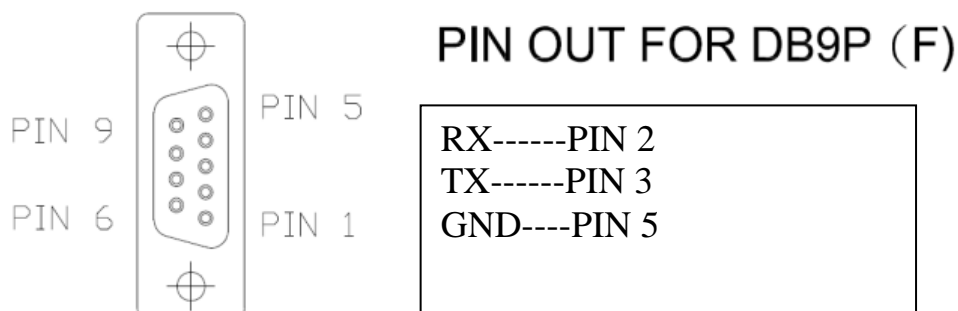
Set parameters of the scale interface on the connected device. It is not possible to change the scale parameters.

- Baud rate: 9600 bps
- Parity check: None
- Data length: 8 bits
- Stop bit: 1 bit
- Handshake: RTS/CTS
- Data code: ASCII

ACTION:

1. Make sure that all wires are connected to the correct points.
2. Check parameters of RS 232 transfer cable interface.
3. Use your PC to output the data to check whether RS 232 transfer cable is okay or not.

RS232 Pin out



USING PRINT FUNCTION

Print function is only available for some specific models, please make sure whether the model has print function or not.

A. Using Printer to print out the results.

You can use external printer directly to print out the results. Simply press the **PRINT** Button after weighing and taking BMI.

B. Using Computer to print out the results.

After taking the weight and BMI, please follow instruction below to print the results:

A. Start Hyper Terminal

Step.1- Click on **Start** Button.

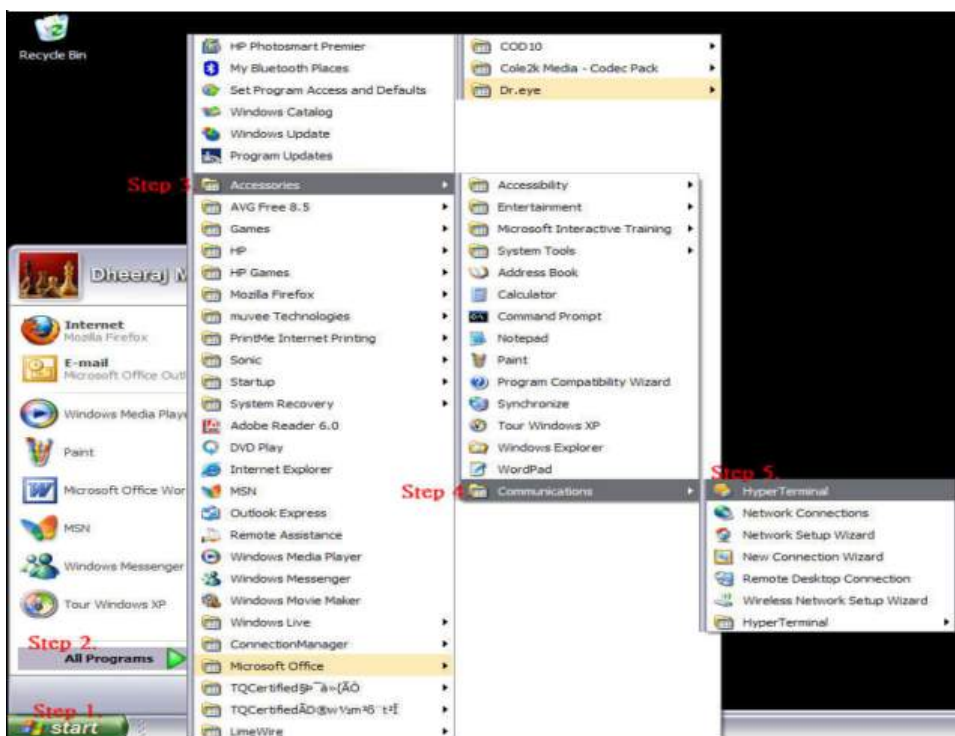
Step.2- Go to **All Programs**.

Step.3- Select **Accessories**.

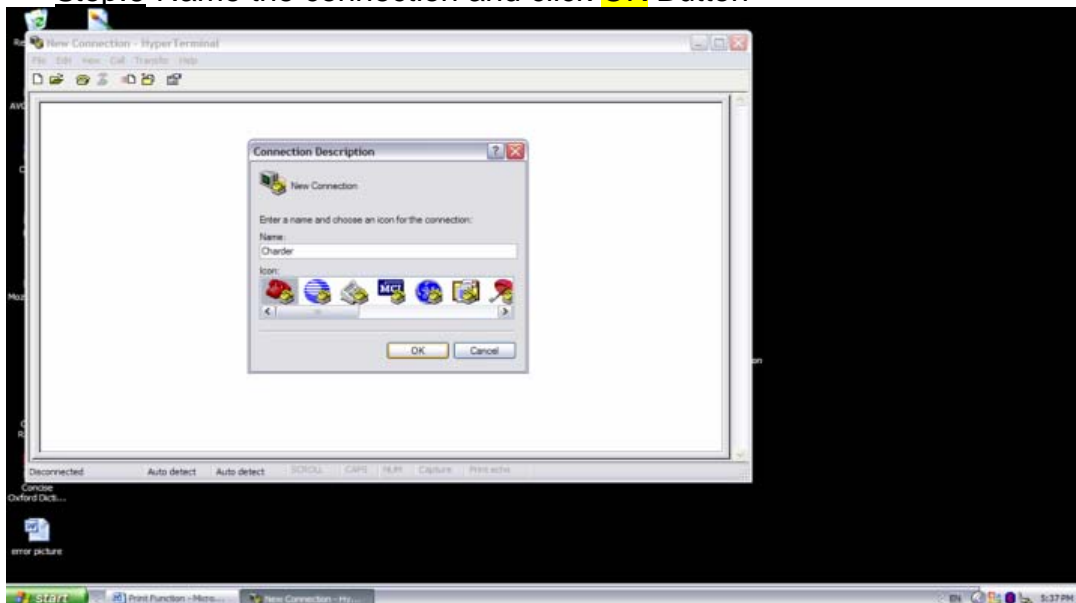
Step.4- Find **Communications**.

Step.5- In Communications section click on **HyperTerminal**.

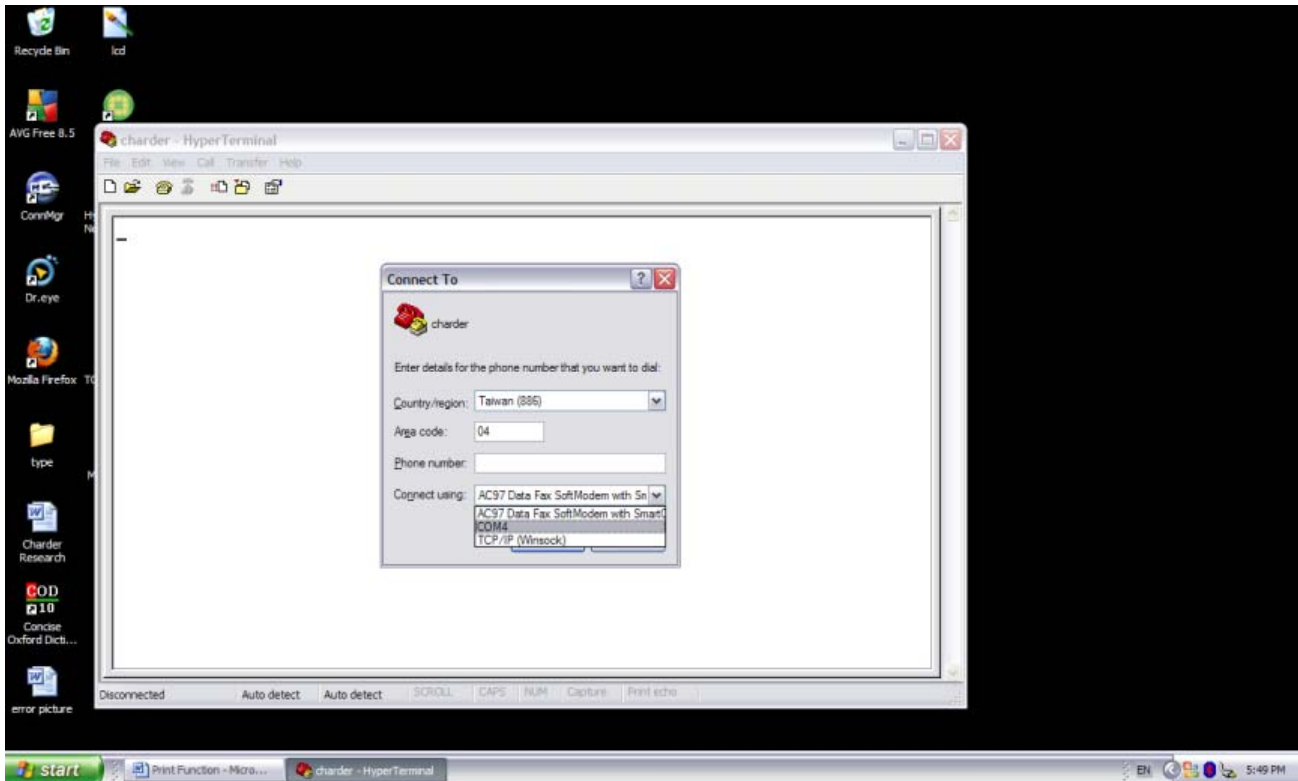
[Step1~5](#)



Step.6-Name the connection and click **OK** Button



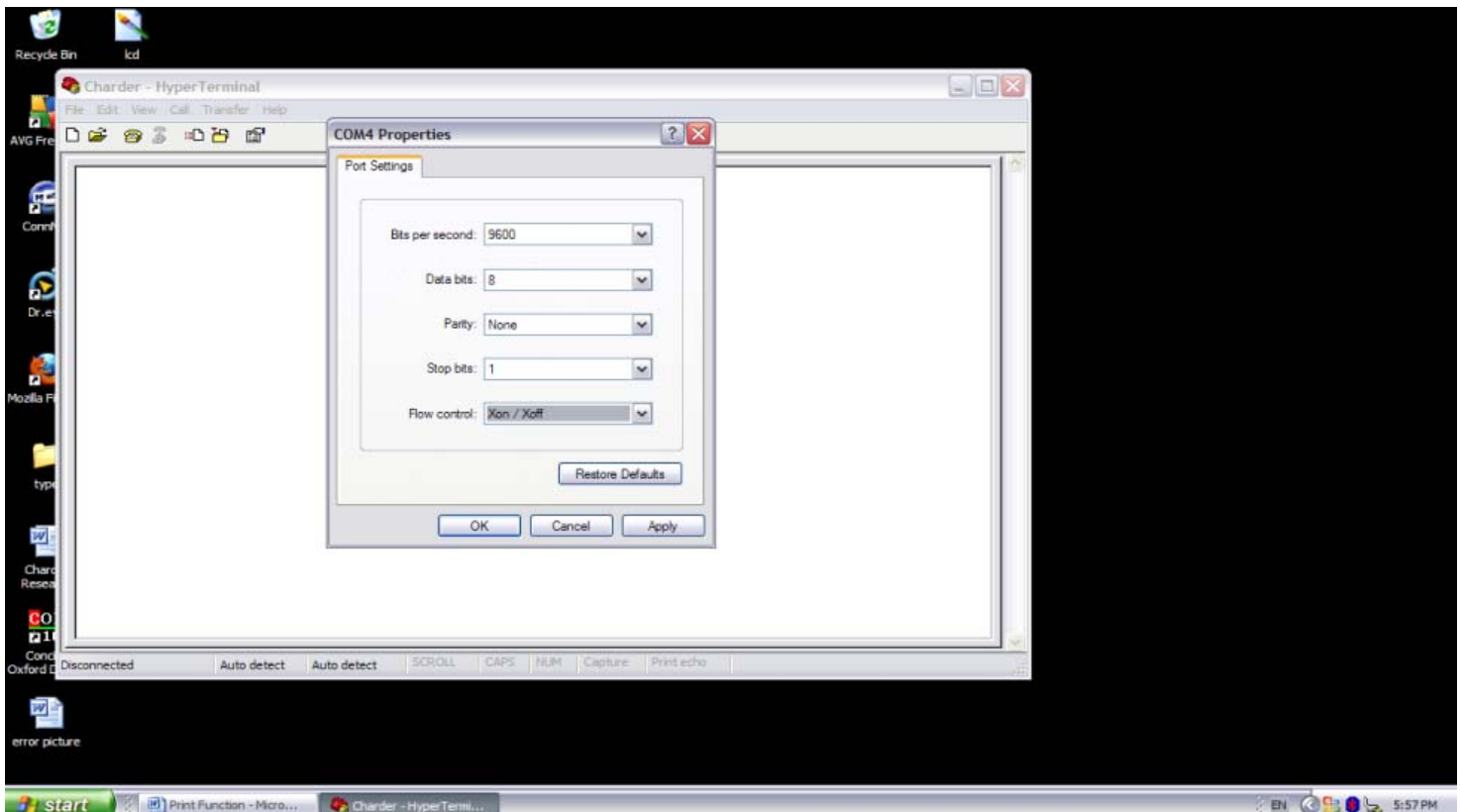
Step.7- Select **COM** (1, 2, 3...4) under **Connect Using** Section and press **OK**.



Step.8- Set Port Settings

Set up as below:

- Baud rate: 9600 bps
- Parity check: None
- Data length: 8 bits
- Stop bit: 1 bit
- Handshake: RTS/CTS
- Data code: ASCII



- Click **OK** button to complete the setting.

Step.9- Print out the results

- After weighing and calculating BMI of the patient, press the print button on the control panel of MS 6001. The results will appear on the computer screen in the below format.

GROSS WEIGHT	60.00kg
TARE WEIGHT	30.00kg
NET WEIGHT	30.00kg
PATIENT HEIGHT	100.0cm
PATIENT B.M.I	37.5
29/12/2008 17:00	