



charder®

### Manufacturer's Declaration of Conformity

This product has been manufactured in accordance with the harmonized European standards, following the provisions of the below stated directives:

**Electro Magnetic Compatibility Directive 2014/30/EU**

**Low Voltage Directive 2014/35/EU**

### FCC CLASS A Declaration of Conformity

This device complies with the limits for a Class A digital device, pursuant to Part 15 of the FCC Rules

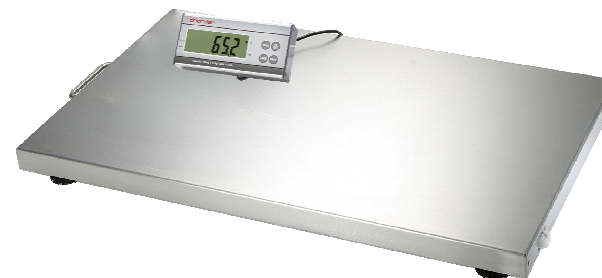
### Manufactured by:



Charder Electronic Co., Ltd.

No.103, Guozhong Rd., Dali Dist.,

Taichung City 412, Taiwan (R.O.C)



# MS 2200

(DP4510)

## USER MANUAL



## **TABLE OF CONTENTS**

PREFACE .....	2
GENERAL INFORMATION .....	2
SAFETY INSTRUCTION .....	2
FCC Compliance Statement.....	3
ENVIROMENTAL .....	3
CLEANING .....	3
MAINTENANCE .....	4
WEIGHING OPERATION.....	4
WARRANTY-LIABILITY .....	4
DISPOSING OF THE SCALE.....	5
SPECIFICATION.....	6
KEY FUNCTIONS .....	7
INSTRUCTION OF USE .....	8
INSTRUCTION FOR CONNECTIVITY AND POWER SUPPLY.....	9
DISPLAY CONNECT TO PLATFORM .....	10
ERROR MESSAGE.....	12

## PREFACE

Thank you for choosing CHARDER MEDICAL product. All features of this product were designed to state of the art and are optimized for simple and straightforward use. If you have any queries or experience any problems not addressed in the operating instructions, please contact your CHARDER MEDICAL service partner, or visit us on the Internet at [www.chardermedical.com](http://www.chardermedical.com)

## GENERAL INFORMATION

We strongly recommend you use the scales on flat and hard surface. Any soft surface, like carpet will cause inaccuracy.

## SAFETY INSTRUCTION



Before putting the device into use, please read with care the information given in the Operating Instructions. They contain important instructions for installation, proper use and maintenance of the device.

The manufacturer shall not be liable for damages arising out of failure to heed the following instructions:

- ◆ When using electrical components under increased safety requirements, always comply with the appropriate regulations.
- ◆ Improper installation will render the warranty null and void.
- ◆ Ensure the voltage marked on the power supply unit matches your mains power supply.
- ◆ This device is designed for use indoors.
- ◆ Observe the permissible ambient temperatures for use
- ◆ The device meets the requirements for electromagnetic compatibility. Do not exceed the maximum values specified in the applicable standards.

If you have any problem, contact your local CHARDER MEDICAL service partner.

## FCC Compliance Statement

This device complies with part 15 of the FCC Rules. Operation is subject to the following two conditions: (1) This device may not cause harmful interference, and (2) this device must accept any interference received, including interference that may cause undesired operation.

NOTE: This equipment has been tested and found to comply with the limits for a Class A digital device, pursuant to part 15 of the FCC Rules. These limits are designed to provide reasonable protection against harmful interference when the equipment is operated in a commercial environment. This equipment generates, uses, and can radiate radio frequency energy and, if not installed and used in accordance with the instruction manual, may cause harmful interference to radio communications. Operation of this equipment in a residential area is likely to cause harmful interference in which case the user will be required to correct the interference at his own expense.





## ENVIROMENTAL

- ◆ All batteries contain toxic compounds; disposal of batteries should be delegated to a competent organisation, complying with the deposit of Poisonous Waste Regulation 1972.
- ◆ Please do not incinerate batteries.
- ◆ The optimum operating temperature for the scale is 5°C to +35°C; although it will operate at higher and lower temperatures the scales battery life will be adversely effected.

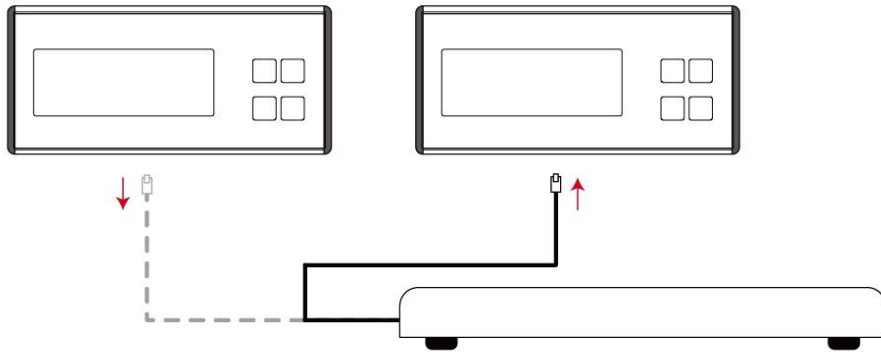
## CLEANING

- ◆ We would recommend using alcohol based wipes or similar when cleaning the scales.
- ◆ Please do not use large amounts of water when cleaning the scales as this will cause damage to the scales electronics, you

## ERROR MESSAGE

ERROR MESSAGE	REASON	ACTION
	Low battery	Connect the DC adaptor to recharge the battery.
	EEPROM error	If the EEPROM memory IC damage, the display will show this message.
	AD board error	If AD board can't transfer data to main board, the display will show this message.
	Overload	If the total load exceeds the capacity of the scale, the display will show this message. The weight must be removed immediately from the scale to prevent damage.

If the display is broken, get another display to be plugged in with RJ45 port without re-calibration procedures which simplifies the installation.



should also refrain from using corrosive liquids or high pressure washers.

- ◆ Always disconnect the scales from the mains power supply before cleaning.

## MAINTENANCE

- ◆ The scale does not require any routine maintenance. However, we recommend checking the scale's accuracy at regular intervals. The regularity of these checks is dependent on the level of use and the state of the scale. If any inaccuracies occur, please contact your local dealer or CHARDER MEDICAL service partner.

## WEIGHING OPERATION

Before reading detailed instructions on how to use all the weighing functions that are built into your scale, please read the following important guidelines:

- ◆ Always be sure that the display shows `Zero` before use, if it does not then please press the ZERO key.
- ◆ The device is designed to detect when a stable weight is achieved, the indicator will `bleep` twice to indicate a stable weight value, your reading should be taken at this point.

## WARRANTY-LIABILITY

- ◆ If a fault or defect is present on receipt of the unit which is within CHARDER MEDICAL's scope of responsibility, CHARDER shall have the right to either repair the fault or supply a replacement unit. Replaced parts shall be the property of CHARDER. Should the fault repairs or replacement delivery not be successful, the statutory

provisions shall be valid. The period of warranty shall be two years, beginning on the date of purchase. Please retain your receipt as proof of purchase. Should your scale require servicing, please contact your dealer or CHARDER MEDICAL Customer Service.

- ◆ No responsibility shall be accepted for damage caused through any of the following reasons: Unsuitable or improper storage or use, incorrect installation or commissioning by the owner or third parties, natural wear, changes or modifications, incorrect or negligent handling, overuse, chemical, electrochemical or electrical interference or humidity, unless this is attributable to negligence on the part of CHARDER MEDICAL.
- ◆ If operating, climatic or any other influences lead to a major change in conditions or material quality, the treaty for perfect unit functioning shall be rendered null and void. If CHARDER provides and individual warranty, this means that the unit supplied will be free of faults for the length of the warranty period.

### DISPOSING OF THE SCALE

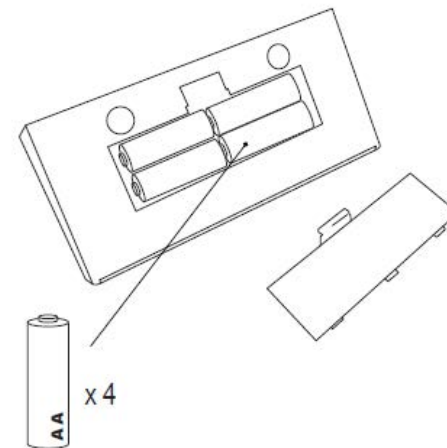
This product is not to be treated as regular household waste, but should be handed into an electrical/electronic equipment recycling centre.

You can obtain further details from your local council, your municipal waste disposal company or the firm which you purchased the product.

Plug AC adapter into the indicator (Left-hand side) to supply power to indicator.

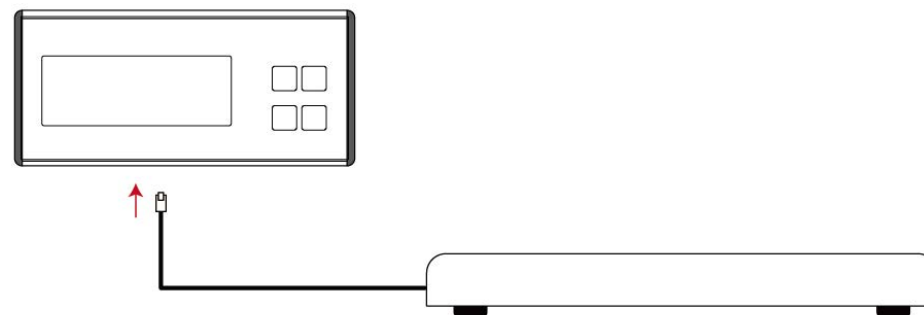
### CHANGE THE BATTERY

Use 4 x AA 1.5V alkaline batteries as power supply.



### DISPLAY CONNECT TO PLATFORM

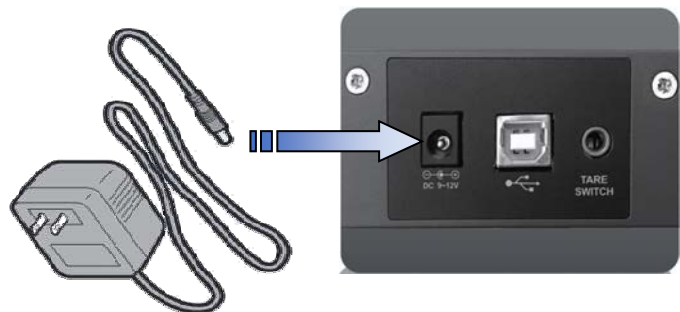
This user-friendly design would offer the simplest way on veterinary care. The feature includes easy-to-install that operator can plug in the RJ45 port from platform wire to connect display together.



## INSTRUCTION FOR CONNECTIVITY AND POWER SUPPLY

### Power Supply

Connect the AC Adaptor to the AC mains supply. Connect the plug to the AC jack on the bottom of the scale as shown in the illustration below. The power outlet should be close to the scale and easily accessible.



### Battery Power

The scale will automatically switch to battery operation if there is a power failure or the power cord is removed to provide uninterrupted scale operation.

**Note:** When low battery Lo is displayed, the scale will shut off after 30 seconds.



### **CAUTION:**

Risk of explosion can occur if replaced with the wrong type or connected improperly.

Do not use the battery for any purpose other than those described in this manual.

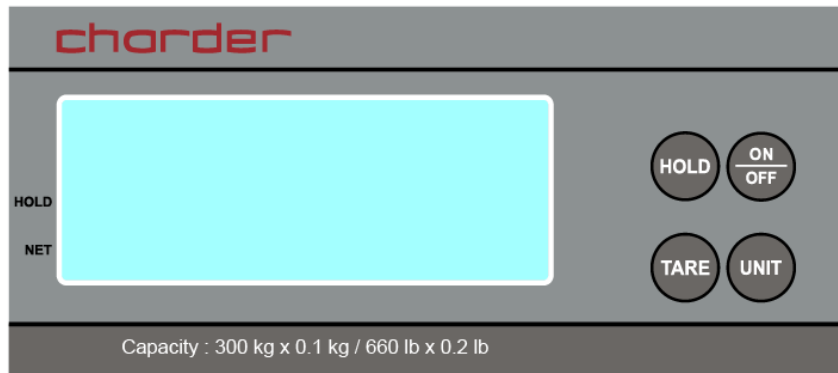
Do not disassemble, repair or otherwise manipulate the battery.

Obey the local laws and regulations on disposing the battery.

## SPECIFICATION

<b>MODEL</b>	MS 2200
<b>CAPACITY</b>	300kg x100g ; 660lb x 0.2lb
<b>ACCURACY</b>	±200g ; ±0.4lb
<b>MEASURING UNIT</b>	kg & lb
<b>LCD DISPLAY</b>	1.0" LCD digital display
<b>DIMENSION</b>	900mm(L) x 550mm(W) x 50mm(H)
<b>KEY FUNCTIONS</b>	ON/OFF , HOLD , UNIT , TARE
<b>POWER SUPPLY</b>	4 x 1.5V AA battery (not included) & AC adaptor (standard)
<b>OPERATING TEMPERATURE</b>	5°C / 35°C

## KEY FUNCTIONS



Key	Description
ON/OFF	Turn on and off display
UNIT	Press to switch between kg or lb
TARE	<ul style="list-style-type: none"> <li>➤ Press to tare the unwanted weight on platform (such as towel or blanket).</li> <li>➤ Tare the weight of subject previously so that the operator can get the net weight only.</li> </ul>
HOLD	The HOLD function is for scale to HOLD the moving weight of animal sitting on the scale. Auto-Hold feature is enabled automatically. Press HOLD again to

\*Tare the weight of subject previously so that the operator can get the net weight only.

## INSTRUCTION OF USE

1. Press ON/OFF button to switch on the scale.
2. First, the LCD displays program version and zero symbol →○← has shown at bottom left. Then LCD displays “0.0kg”
3. Let the pet sitting on the scale.
4. LCD displays the weight of pet.
5. The auto-hold function will start to lock the weight.
6. Weight will be displayed while it is stable
7. Press HOLD button to release auto-hold feature or let the pet leave the platform then HOLD will be released.

### **Over weight:**

When the weight exceeds the limit of the scale then “Err” code will appear on LCD. It is recommended to unload the weight to normal measuring range or will damage the scale.

**TARE:** Tare button is to deduct the weight of subject which is on the platform.

For example:

- ◆ We usually place a rubber mat on platform before we measure the animal. A rubber mat weights 1.5kg. When loading the animal the scale displays 1.5kg more. Because of a rubber mat.
- ◆ Press TARE button after placing a rubber mat on the platform to tare the weight before loading animal. You will get “0.0kg”. Then loading the animal to acquire net weight.